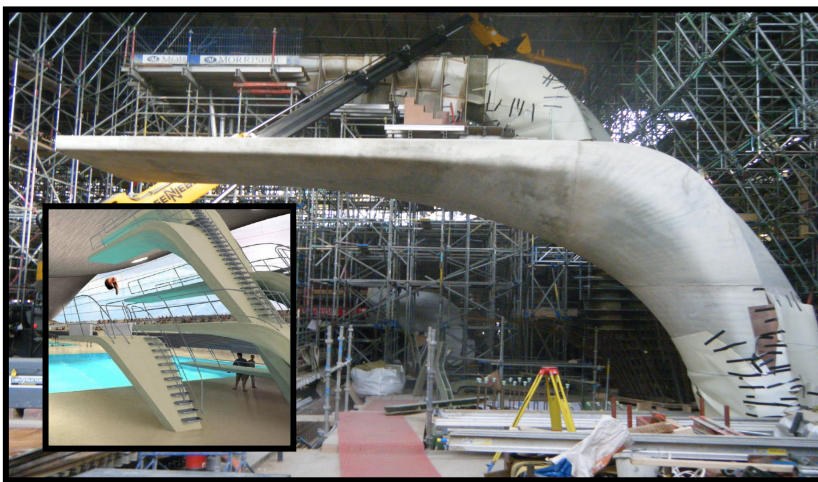


PGF REVIEW

QUARTER 1 - 2011

OLYMPIC QUALIFICATION

Looking remarkably faithful to the initial Computer Generated Graphics, the Diving Boards for the 2012 London Olympics have now been 'poured' and the Production Glassfibre manufactured shuttering removed, to reveal something more like sculpture than structure! Testing our ability in the extreme to ensure every unusual radius was accurate, every joint was just right and every strength calculation correct, the project was delivered to specification, to schedule, and to budget. Now if Lord Coe can manage the rest of the infrastructure just as competently everything should be in order for next year!



and 55!!

In last Quarters Newsletter we proudly announced that we had been appointed as the supplier to Ginetta of all parts for their G50 model. Now we can add the new G55 to the roster! Developed in super quick time to be ready for this years BTCC start on March 1st, the car is more powerful and more aerodynamically advanced than any previous Ginetta GT, which should translate in to Porsche comparable lap times when it hits the race tracks. And thanks to its new glassfibre bodywork, we think it's also going to be the best looking Ginetta ever!!



NEW NORTH FACTORY NOW FULLY OPERATIONAL

The amalgamation of our two Northern facilities was completed on Christmas Eve when the ex- WL Cunliffe factory at Skelmersdale was closed for the last time, after moving all production to Chorley over the previous 13 weeks. The brand new 5,000sqm building has General, Specialist RTM and Cold Closed moulding sections.



We also have Pattern Making facilities, Paint and Curing Ovens, Extracted Trimming and Finishing Shops, proper storage, great yard space and good offices.

We think it's the best glassfibre facility in the UK and would welcome any visit for a tour of our new flagship factory



production  **GLASSFIBRE**
THE UK'S LARGEST GENERAL MOULDER

Fire destroys Kirkcaldy factory.....

Every businesses nightmare struck our Scottish manufacturing facility when a fire broke out at 3.30 on Wednesday 15th December. Apparently starting in the laminating shop, which by that time was finished for the day, it eventually took hold of the entire building with the exception of the stand alone office block. Everyone was evacuated safely in line with our well practiced procedures, with the only injury being minor burns to the arms of one employee.

The fire service utilised six pumps and one 'tower' but were unable to extinguish the blaze which as well as destroying the building, consumed the contents including plant, moulds and materials. An employee of the company has subsequently been charged with Culpable Fire Raising and will appear in court in January. The charge under Scottish Law implies an accidental act, but deserving of blame.

.....new factory opens after 4 days!

If how it reacts to a crisis defines a companies DNA, then Production Glassfibre can proudly declare itself alive and kicking. After recovering the Central Server at 10pm, it was up and running remotely by start of business on the Friday ensuring debtors, creditors, payroll and technical information was unaffected. E:mail was working by 2pm, and the search for a temporary home was underway over the weekend. Two trucks with raw materials, tools, a compressor and a generator were dispatched from our Lancashire business through the snow on Saturday and we had secured access to a modern, heated 20,000sqft facility within five miles of the 'old' factory by mid-day on Tuesday. A quick fit-out ensured we were manufacturing again within four days of the disaster, supplementing the production we had been immediately able to transfer to our other factories.

By the Monday evening, a product by product Recovery Plan had already been presented to all our significant customers, and 30+ employees then worked through the Christmas 'break' to ensure the plans would be executed as promised.

As this is written, we have 30,000sqft of space to work from between two sites, and are well on our way to ensuring the success of the turnaround.



PGF in 24 hour triumph

A very late entry to the UK's most prestigious long distance motor race proved to be no handicap for the MJC/PGF sponsored Ferrari 430 GT2 supercar. The Sky televised event runs around the clock at Silverstone's Grand Prix circuit each October, and amazingly after 24 non-stop hours of racing through rain, fog and a little sunshine, the team of 4 drivers headed the second place, Austrian entered Porsche team, by less than a minute! A magnificent achievement for an amateur team.



production **GLASSFIBRE**

THE UK'S LARGEST GENERAL MOULDER

Wilstead Ind. Park,
Wilstead, BEDS,
MK45 3PD
T.01234 741 444
F.01234 742 095



Buckshaw Link,
Chorley, LANCS,
PR7 7EL
T. 01772 622 444
F .01772 437 843



Southfield Industrial Estate,
Glenrothes, FIFE,
KY6 2TF
T.01592 650 444
F.01592 652 444



E. sales@productionglassfibre.co.uk
W. www.productionglassfibre.co.uk